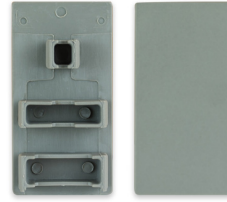
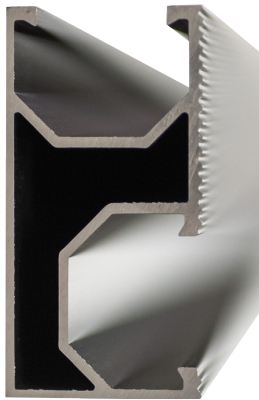


Solar Mounting Catalogue

Neutron Power Mounting Systems

Pitched Roof Racking System



Silver GD Rail Cap

GSADRCSC



Black GD Rail Cap

GSADRCN



Plastic Coated S/S Cable Ties

GSCT01

FEATURES

- **Easy Installation:** The tilt-in module can be put into the extruded rail from any section and can be pre-assembled with the clamp and roof hook, minimising time and cost of installation
- **Flexibility & Adjustable:** These systems accommodate most commercially available framed or frameless solar panels and diverse roof types
- **Safety & reliability:** The racking systems can stand up to the extreme weather and comply with AS/NZS 1170 load standards

FEATURES

- Material: Al6005-T5
- Patent extruded aluminium section
- High class anodized aluminium

Neutron Power Pitched Roof designs have great flexibility for both commercial and residential roof solar systems. Suitable for installing framed and frameless modules flush to a pitched roof. Special extruded aluminium rail, pre-assembled clamps and varied roof hooks or brackets with tilt-in modules ensure easy and quick installation, saving on labour time and cost. The customised rail lengths do not require on-site cutting or welding – maximising the appearance, structural strength and anti-corrosive performance.

PV Mounting Rail

GSDR2560	Rail with a standard length of 2560mm
GSDR3405	Rail with a standard length of 3405mm
GSDR4200	Rail with standard length of 4200mm
GSDR4200BLACK	Black rail with standard length of 4200mm
GSDR4500	Rail with standard length of 4500mm
GSDR4500BLACK	Black rail with standard length of 4500mm

Technical Information

Install Site	Pitched roof
Tilt angle	Flush with roof up to 60°
Building height	Up to 20 metres
Max wind speed	Up to 60 metres/ second
Snow load	Up to 1.4 KN/m ²
Material	High class aluminium alloy, stainless steel
Anti-corrosive life	Anodized
Product life expectancy	More than 20 years
Warranty	10 years



Rail Splice Kit

GSDRSP



Rail Splice Kit Black

GSDRSPBLACK

FEATURES

- Material: Al6005-T5 & A2-70 bolt
- Connects two rail units





PRODUCT CODE	DESCRIPTION	NO.
Framed Module Clamps		
GSEC35	End clamp kit 35mm	1
GSEC35BLACK	End clamp kit 35mm black	2
GSEC40	End clamp kit 40mm	1
GSEC40BLACK	End clamp kit 40mm black	2
GSEC46	End clamp kit 46mm	1
GSEC46BLACK	Black end clamp kit 46mm	2
GSEC50	End clamp kit 50mm	1
GSECL80	Glass panel end clamp kit 80mm	5
GSECL150	Glass panel end clamp kit 150mm	5
GSIC35	Inter clamp kit 35mm	3
GSIC35BLACK	Inter clamp kit 35mm black	4
GSIC40	Inter clamp kit 40mm	3
GSIC40BLACK	Inter clamp kit 40mm black	4
GSIC46	Inter clamp kit 46mm	3
GSIC46BLACK	Inter clamp kit 46mm black	4
GSIC50	Inter clamp kit 50mm	3
GSICL80	Glass panel inter clamp kit 80mm	6
GSICL150	Glass panel inter clamp kit 150mm	6



PRODUCT CODE	DESCRIPTION	NO.
Pitched Roof Racking		
GSDM25	GS tilt-in set for tile hook	1
GSIK01	Fixed tile bracket stainless steel	2
GSIK01NZ	Fixed tile bracket NZ dimensions stainless steel	2
GSIK05	Aluminium tin interface kit	3
GSIK05BLACK	Aluminium tin interface kit black	4
GSIKH04	Hanger bolt hook	5
BRKTADJTILE	Solar adjustable tile bracket	6
BRKTFLASH	Solar flashfoot single bracket	7
SOLAREJOTI0050	EJOT solarbolt for steel purlins	8
GSRP2550	Rubber pad for GSIK05	9



Neutron Power Mounting Systems

Tilt Racking System



Neutron Power Adjustable Tilt Solar Racking System is applicable to install the usual framed module to tilt a certain angle with the roof.

The solar system can be a fixed angle or adjustable such as 10~15 deg, 15~30 deg and 30~60 deg for your requirement. The special extruded aluminium rail, the tilt-in module, the clamp kit and the round leg can be pre-assembled and make the installation easy and quick to save your labour costs and time. The customised length can eliminate the need to weld and cut on site to keep the high anticorrosive performance, the structures strength and the appearance.

Technical Information

Install Site	Low profile roof or flat roof
Tilt angle	10 ~ 60°
Building height	Up to 20 metres
Max wind speed	Up to 60 metres/ second
Snow load	Up to 1.4 KN/m2
Standards	AS/NZS 1170 & other international standards
Material	High class aluminium alloy, stainless steel
Anti-corrosive	Anodized aluminium & stainless steel
Life expectancy	More than 20 years
Warranty	10 years

FEATURES

- **Easy Installation:** The tilt-in module can be put into the extruded rail from any section and can be pre-assembled with the clamp and roof hook, minimising time and cost of installation
- **Durability:** Providing broad installation flexibility. These systems can accommodate most commercially available framed solar panels and diverse roof types. They can also scale easily from small to large, multi-megawatt installations
- **Flexibility & Adjustable:** These systems accommodate most commercially available framed or frameless solar panels and diverse roof types
- **Safety & reliability:** The racking systems comply with AS/NZS 1170 safety standards and other international structure load standards. Main support components have been tested to guarantee structure and load carrying capacity



PRODUCT CODE	DESCRIPTION	NO.	PRODUCT CODE	DESCRIPTION	NO.
BRKTILTINT	Solar tilt interface bracket kit	1	GSADRL3060BLACK	Black adjustable rear leg 15-30 degrees	8
GSADFL	Adjustable front leg for tin roof	2	GSNT0115	Triangle bracket NT01 15 degrees	9
GSADRLBLACK	Adjustable rear leg 10-15 degrees	3	GSNT0125	Triangle bracket NT01 25 degrees	10
GSADRLI015	Adjustable rear leg 10-15 degrees	4	GSNT0215	Triangle bracket NT02 15 degrees	11
GSADRLI530	Adjustable rear leg 15-30 degrees	5	GSNT0225	Triangle bracket NT02 25 degrees	12
GSADRLI530BLACK	Black adjustable front leg for tin roof	6	GSRCDC	Cross connector with D nut for triangle bracket	13
GSADRL3060	Adjustable rear leg 30-60 degrees	7			



Grounding Lug Aluminium

GSGGL



Bonding Jumper

GSGBJA



Grounding Clip

GSGCC

FEATURES

- One of the only reliable ways to connect a system to the equipment ground conductor

FEATURES

- Material: Braided copper wire, stainless steel clip & A2-70 bolt
- Electrically connects spliced rails
- Excellent electricity conductivity

FEATURES

- Material: SUS304 stainless steel
- Works with Inter Clamp to install on Neutron Power rail



Neutron Power Ground Mounting System is suitable for framed or frameless module PV arrays.

GROUNDMTASSY

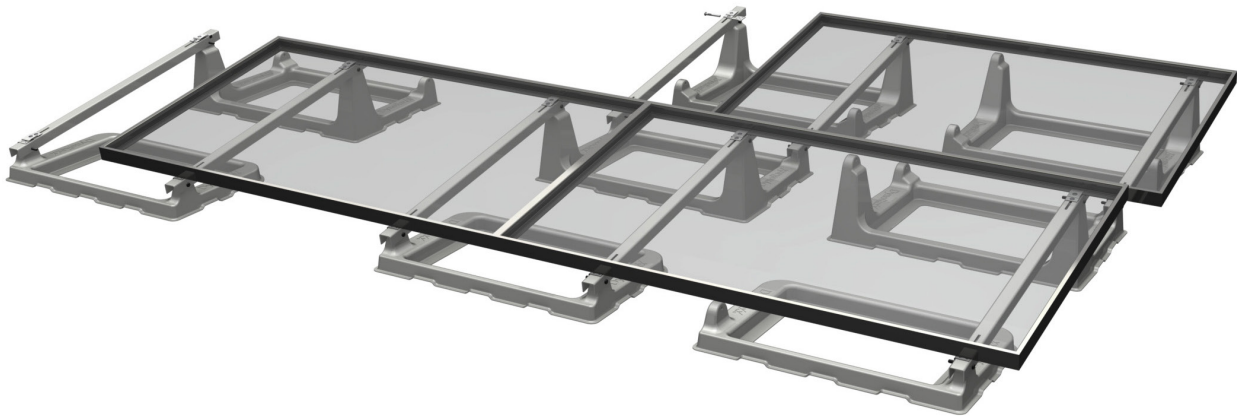
Neutron Power grounding products can be used to bond solar modules to the aluminium rails and the aluminium rails to the ground, so the entire solar system is grounded and safe. Grounding products include the stainless steel grounding clip and aluminium grounding lug, which are all designed to comply with the requirement of AS5033, UL467 for bonding or grounding systems.

FEATURES

- Easy Installation:** Parts have been pre-assembled in the factory to save on installation time
- Flexibility & Adjustability:** Smart design reduces the difficulty of installations in most conditions
- Safety & Reliability:** The structure has been checked and tested rigorously against extreme weather conditions



PRODUCT CODE	DESCRIPTION	NO.
GSGM3405GROUND	Ground mount rail 3405mm	1
GSBRSC60	Ground mount clamp	2
GSBRSP	Ground mount rail splice kit	3
GSPGBA	Ground mount support beam	4
GSPGOP2950	Ground mount support open post 2950mm	5
GSPGTC	Ground mount support beam top cap	6



DynoRaxx Evolution FR delivers a tool-less ballasted racking system for mounting PV solar panels on flat roofs and surfaces. The proprietary design of the DynoRaxx ballasted-racking system has been created to simplify and speed installation without compromising quality or performance. With DynoRaxx Evolution FR, buying commercial solar panel racking has never been more cost-effective.

RUGGED CONSTRUCTION

- Baskets – Fibreglass
- Rails – Fibreglass
- Clamps – 304 stainless steel

EASY INSTALLATION

- Initial measurement and chalk line needed for placement of first row
- Precision components require no field measuring
- Assembles without tools
- Saves time and labour to install more modules per hour
- Ballast weight to be supplied by customer

HIGH PERFORMANCE

- PE Certified
- ASCE 7-05 compliant
- IBC 2006 compliant
- Wind tunnel tested

WARRANTY

DynoRaxx Evolution carries a 10-year limited material and workmanship warranty

PRODUCT CODE	DESCRIPTION
Dynoraxx Mounting System	
DR2LBASKET	Two leg basket
DR4LBASKET	Four leg basket
DRBOND	Dynobond 8"
DRBOND38	Dynobond 38"
DREVOPRCLAMP	Evolution pitched roof clamp
DREVOPRRAIL	Evolution pitched roof rail
DRLOCKINGPIN	Locking pin
DRRAIL	Rail with dynoslide and pins

FEATURES

- Fibreglass
- Proprietary racking enables fast installation in less than half the time of other systems
- No tools needed for assembly — one-step pivot clamp secures panels to racking
- Versatility to accommodate all framed PV solar panels on the market
- Eliminates need to penetrate roof with fasteners on most installations
- Smaller footprint than competitive systems saves roof space and adds flexibility
- 10° tilt available
- Elevated system — does not impede water drainage
- Non-corrosive
- No thermal expansion

S-5 Mounting Brackets

PV Module Mounting Brackets

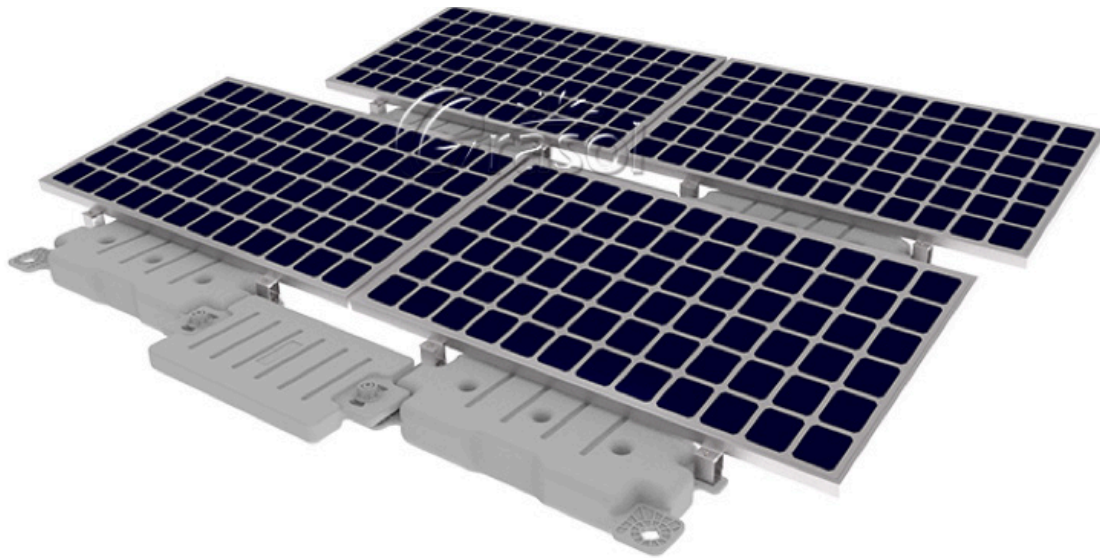


PRODUCT CODE	DESCRIPTION	PICTURE NO.
S-5-K GRIP MINI	Grip mini aluminium utility clamp	1
S-5-PROTEA BRACKET	Protea bracket stainless steel utility clamp	2
S-5-PV EDGE GRAB KIT	Edge grab kit end clamp	3
S-5-S CLAMP	Aluminium utility clamp	4
S-5-U MINI	Mini aluminium utility clamp	5
S-5PVKIT	PV kit solar mounting bracket mid clamp	6
S-5STOPFIXCORBRKTAU	Top fix corrugated bracket-au	7
S-5STOPFIXCORBRKTAUMINI	Top fix corrugated bracket-au mini	8
S-5TRAPBRKTKSRW	Trap bracket KSRW	9
S-5-E CLAMP	PV kit solar mounting bracket mid clamp	10
S-5-E MINI	Top fix corrugated bracket-au	11
S-5-S MINI	Top fix corrugated bracket-au mini	12

PV Mounting Systems

Floating PV Mounting System

YHI Part Code **GSFLOATING**



- The mounting system material is outdoor rated and resists constant environmental changes such as fluctuating temperatures. The mounting system is also UV-proof, anti-aging, pollution-free and recyclable.
- The upper surface of the floating body applies a non-slip pattern design, which guarantees the safety and stability of the installation team. The four corners are all obtuse to avoid injury caused by slipping and coming into contact with the core structure.
- The floating body is stable and durable.
- The system needs no maintenance and boasts a low total cost of ownership.
- Assembly is simple, quick and flexible.

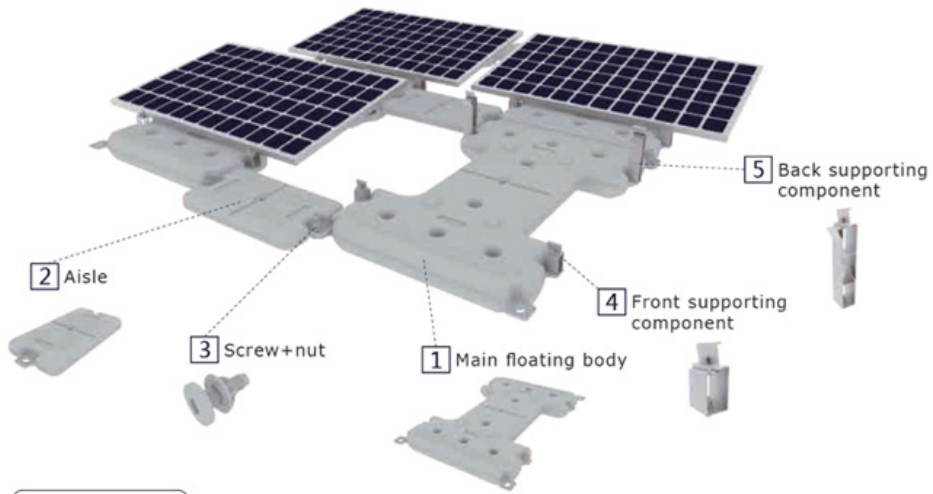
PRODUCT ADVANTAGES

Power Generation Efficiency	Floating PV Plant Good cooling effect to the PV components, 10% higher efficiency, long term advantage	Normal Plant General efficiency
Cost	Floating PV Plant 5%-8% higher initial output	Normal Plant Less cost
Construction	Floating PV Plant Less work, shorter construction period	Normal Plant More work, longer construction period
Maintenance	Floating PV Plant Strong resistance to natural disasters, requires simple cleaning and maintenance	Normal Plant Weaker resistance to natural disaster
Ecology	Floating PV Plant Pollution-free, inhibits algae growth and water evaporation	Normal Plant Ecological damage during construction
Occupied Area	Floating PV Plant 200 acre/10MW	Normal Plant 300 acre/10MW
Site Requirement	Floating PV Plant Water area, depth over 1 metre	Normal Plant High requirements

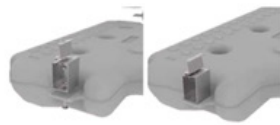
PV Mounting Systems

Floating PV Mounting System

Product assembly

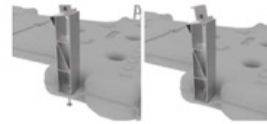


Assembly step



Step 1

Fix the front supporting component to the main floating body



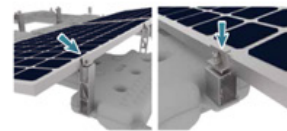
Step 2

Fix the back supporting component to the main floating body



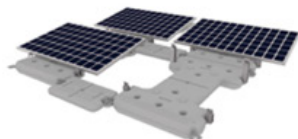
Step 3

Connecting floating body and aisle with plastic screw + nuts, and put the connection part into the designated position in the water seriatim.



Step 4

Put the solar panel on the supporting components which is hooked on to the bottom frame of the panel tightly



Step 5

Install other solar panels according to step 4.

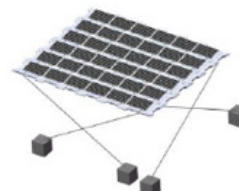
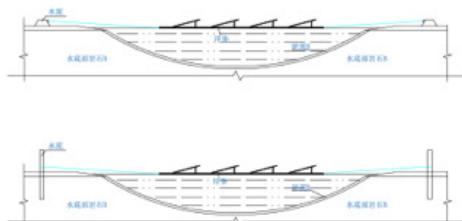


Step 6

Installation completed

Fixation

- 1
Precast concrete
 applied to the proper sedimentation, low, stable and close to the bank side area
- 2
Underwater fixation
 applied to the large water area with depth over 6 meters and complex topographic condition





Auckland

Phone 09 250 0000

Hamilton

Phone 07 847 0526

Tauranga

Phone 07 572 3391

Napier

Phone 06 600 0115

Wellington

Phone 04 569 6485

Christchurch

Phone 03 338 3125

Dunedin

Phone 03 455 0280

Invercargill

Phone 03 777 9014



ENERGY

YHI BATTERY • SOLAR • STORAGE • EV CHARGING