

SOLAR MOUNTING CATALOGUE

0800 99 33 44

yhienergy.co.nz

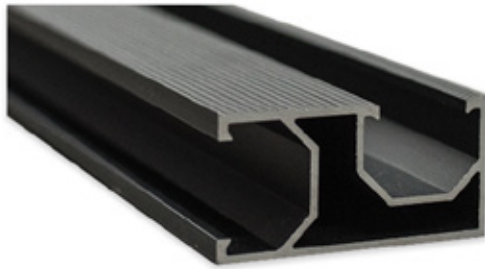
energysales@yhi.co.nz



YHI

Neutron Power Mounting Systems

Pitched Roof Racking System



GSDR4500PBLACK



Black GD Rail Cap

GSADRGN



Plastic Coated S/S Cable Ties

GSCT01

FEATURES

- **Easy Installation:** The tilt-in module can be put into the extruded rail from any section and can be pre-assembled with the clamp and roof hook, minimising time and cost of installation
- **Flexibility & Adjustable:** These systems accommodate most commercially available framed or frameless solar panels and diverse roof types
- **Safety & reliability:** The racking systems can stand up to the extreme weather and comply with AS/NZS 1170 load standards

FEATURES

- Material: Al6005-T5
- Patent extruded aluminium section
- High class anodized aluminium

PV Mounting Rail

GSDR4500BLACK

Black rail with standard length of 4500mm

GSSSCC05

S/S cable clip for 2 cables

Neutron Power Pitched Roof designs have great flexibility for both commercial and residential roof solar systems. Suitable for installing framed and frameless modules flush to a pitched roof. Special extruded aluminium rail, pre-assembled clamps and varied roof hooks or brackets with tilt-in modules ensure easy and quick installation, saving on labour time and cost. The customised rail lengths do not require on-site cutting or welding – maximising the appearance, structural strength and anti-corrosive performance.



Rail Splice Kit Black

GSDRSPBLACK

Technical Information

Install Site	Pitched roof
Tilt angle	Flush with roof up to 60°
Building height	Up to 20 metres
Max wind speed	Up to 60 metres/ second
Snow load	Up to 1.4 KN/m ²
Material	High class aluminium alloy, stainless steel
Anti-corrosive life	Anodized
Product life expectancy	More than 20 years
Warranty	10 years

FEATURES

- Material: Al6005-T5 & A2-70 bolt
- Connects two rail units





PRODUCT CODE	DESCRIPTION	NO.
Framed Module Clamps		
GSEC30BLACK	End clamp kit 30mm black	1
GSIC30BLACK	Inter clamp kit 30mm black	2
GS50ECF30	End clamp kit 50mm wide 30mm	3
GS50ICF30	Inter clamp kit 50mm wide 30mm	4



PRODUCT CODE	DESCRIPTION	NO.
Pitched Roof Racking		
GSIK01NZ	Fixed tile bracket NZ dimensions stainless steel	1
GSIK05BLACK	Aluminium tin interface kit black	2
BRKTFLASH	Solar flashfoot single bracket	3
GSDM25BLACK	GS tilt-in set for tile hook black	4
GSSIKA01	Standing seam universal tin roof hook	5



Neutron Power Mounting Systems

Tilt Racking System



Neutron Power Adjustable Tilt Solar Racking System is applicable to install the usual framed module to tilt a certain angle with the roof.

The solar system can be a fixed angle or adjustable such as 10~15 deg, 15~30 deg and 30~60 deg for your requirement. The special extruded aluminium rail, the tilt-in module, the clamp kit and the round leg can be pre-assembled and make the installation easy and quick to save your labour costs and time. The customised length can eliminate the need to weld and cut on site to keep the high anticorrosive performance, the structures strength and the appearance.

Technical Information

Install Site	Low profile roof or flat roof
Tilt angle	10 ~ 60°
Building height	Up to 20 metres
Max wind speed	Up to 60 metres/ second
Snow load	Up to 1.4 KN/m2
Standards	AS/NZS 1170 & other international standards
Material	High class aluminium alloy, stainless steel
Anti-corrosive	Anodized aluminium & stainless steel
Life expectancy	More than 20 years
Warranty	10 years

FEATURES

- **Easy Installation:** The tilt-in module can be put into the extruded rail from any section and can be pre-assembled with the clamp and roof hook, minimising time and cost of installation
- **Durability:** Providing broad installation flexibility. These systems can accommodate most commercially available framed solar panels and diverse roof types. They can also scale easily from small to large, multi-megawatt installations
- **Flexibility & Adjustable:** These systems accommodate most commercially available framed or frameless solar panels and diverse roof types
- **Safety & reliability:** The racking systems comply with AS/NZS 1170 safety standards and other international structure load standards. Main support components have been tested to guarantee structure and load carrying capacity



PRODUCT CODE	DESCRIPTION	NO.
GSADRLBLACK	Adjustable rear leg 10-15 degrees	1
GSADRL1530BLACK	Black adjustable front leg for tin roof	2
GSADRL3060BLACK	Black adjustable rear leg 15-30 degrees	3
GSRCDC	Cross connector with D nut for triangle bracket	4
GSADFLBLACK	Black adjustable front leg for tin roof	5

Grounding Components



Grounding Lug Aluminium

GSGGL



Bonding Jumper

GSGBJA



Grounding Clip

GSGGC

FEATURES

- One of the only reliable ways to connect a system to the equipment ground conductor

FEATURES

- Material: Braided copper wire, stainless steel clip & A2-70 bolt
- Electrically connects spliced rails, excellent electricity conductivity

FEATURES

- Material: SUS304 stainless steel
- Works with Inter Clamp to install on Neutron Power rail

Neutron Power Mounting Systems

Ground Mount



Neutron Power Ground Mounting System is suitable for framed or frameless module PV arrays.

[GROUNDMTASSY](#)

Neutron Power grounding products can be used to bond solar modules to the aluminium rails and the aluminium rails to the ground, so the entire solar system is grounded and safe. Grounding products include the stainless steel grounding clip and aluminium grounding lug, which are all designed to comply with the requirement of AS5033, UL467 for bonding or grounding systems.

Kits available, talk to your YHI account manager to place your order.

FEATURES

- **Easy Installation:** Parts have been pre-assembled in the factory to save on installation time
- **Flexibility & Adjustability:** Smart design reduces the difficulty of installations in most conditions
- **Safety & Reliability:** The structure has been checked and tested rigorously against extreme weather conditions



PRODUCT CODE	DESCRIPTION	NO.
GSGM3405GROUND	Ground mount rail 3405mm	1
GSBRSC60	Ground mount clamp	2
GSBRSP	Ground mount rail splice kit	3
GSPGBA	Ground mount support beam 2740mm	4
GSPGOP2950	Ground mount support open post 2950mm	5
GSPGTC	Ground mount support beam top cap	6
GSPGBA3070	Ground mount support beam 3070mm	7
GSPGH01	Ground mount support clamp	8
GSAGT1520	Ground mount leg tube 1520mm	9

Auckland

Phone 09 250 0000

Napier

Phone 06 600 0115

Christchurch

Phone 03 338 3125

Hamilton

Phone 07 847 0526

Palmerston North

Phone 06 222 3150

Dunedin

Phone 03 455 0280

Tauranga

Phone 07 572 3391

Wellington

Phone 04 569 6485

Invercargill

Phone 03 777 9014

0800 99 33 44

yhienergy.co.nz

energysales@yhi.co.nz



YHI