

# THE ENERGY

## The all-new Sunny Tripower CORE 2 More options, more integration, more performance.

As the new kid on the block, one would think that the new 110kW SMA Sunny Tripower CORE2 would have something to prove, but its reputation precedes it.

With 12 best-in-class MPP trackers with 24 strings, the Sunny Tripower CORE2 provides the ultimate flexibility in system design for large-scale commercial projects for both ground-mount and rooftop solar systems.

Wrapped in an IP66 rated shell complete with C5 corrosion protection, the CORE2 features a maximum DC input voltage of up to 1,100VDC and supports both bifacial and 500W+ PV modules thanks to its inbuilt DC isolator.

The Sunny Tripower CORE2 allows the system owner to reap the rewards of the highest possible power and maximum yields thanks to SMA's well-known Smart Connected technology, but now boasts SMA's innovative new ShadeFix software. This solution intelligently determines cells in the solar array affected by shading and shuts them down, meaning the current can flow freely through all working cells without being slowed when trying to push through a shaded cell.

Ready for all current and future needs, SMA's impressive new inverter integrates seamlessly with the SMA Ecosystem, making setup a breeze.



## The spotlight's on Vision Battery's VRLA FM series

Vision's FM series consists of a general-purpose range and a deep cycle range of valve-regulated lead acid AGM type batteries. Each with a design life in standby applications of 10 years.

The FM series has been perfected through years of testing and improvements, which translate into their excellent reputation with customers for reliability and value. The FM series' AGM batteries are sealed, maintenance-free and can be installed in any direction.

The general-purpose type is designed more towards standby applications, they are a low impedance design with great charge acceptance and extremely low self-discharge ensuring reliability. Perfect for a range of different applications like communication, utility standby power, emergency lighting and UPS.

The second battery type within the FM series range are the deep cycle FM-D batteries, designed for cyclic use. These batteries have been created with a special combination of alloy and lead paste in their plate design, allowing for deep discharge cycles and a longer cycle life. They have a higher temperature capacity, reducing the risk of thermal runaway and dehydration and are suitable for use in more rigorous environments. These batteries are perfect for small motive power, energy storage and small PV applications.

## Remember, we're here to support you!

Talk to your account manager about how our specialised marketing team can support your business through the avenues below - custom branding can be arranged.





# We're welcoming the new Eaton 15/20kVA 9SX to the YHI Energy product family

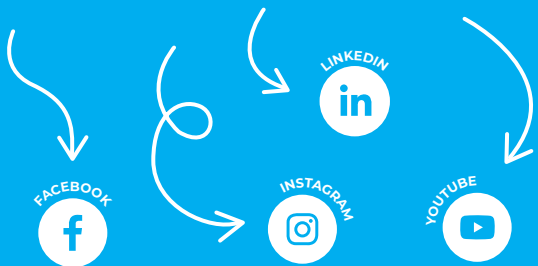
We're proud to introduce the newest member joining our Eaton product family - the 15/20kVA 9SX!

At face value, the 9SX sports a robust shell fitted with a shiny coloured touchscreen LCD. This little screen is equipped with its very own built-in gravity sensor that automatically rotates the screen based on the UPS's deployment orientation, whether it's rack mounted or free standing (tower).

Looking a little deeper, packed tightly into the new 9SX's short depth chassis and small footprint is an array of beneficial features including its best-in-class online mode efficiency through ESS mode, Eaton's ABM technology which increases battery life by 50%, and its ability to endure harsh environments.

In addition, the 9SX reduces energy usage and CO2 emissions to help its owners save costs on power and cooling, and its versatile wiring makes it easy to implement in a wide range of electrical environments, along with giving it the capability of connecting as single or 3 phase in and single or 3 phase out.

## Socialise with us!



## Keep up to date through our social media platforms!

Be the first to learn about our latest products by following us on social media! We'll also be bringing you comprehensive information on the innovative technology our world-renowned brands provide, along with insights on our company and some of the cool things we do - and so much more!



## The FORCE is with us

We've landed the sought-after Pylontech FORCE lithium batteries!

Having inherited Pylon Technologies Co. Ltd.'s modular design concept combined with easy installation, simple connectors and outdoor compatibility, the new FORCE range of LV and HV (low voltage and high voltage) batteries really are a force to be reckoned with.

Being easily stackable, the FORCE batteries ensure the utmost flexibility, and the in-built LFP cell enables a long life and superior safety, especially since it's wrapped in an IP55-rated shell! Although it's rated for the outdoors, the FORCE range sports a sleek, furniture-like exterior, meaning it'd fit right in if preferred indoors instead.

Proven to have the longest list of inverter compatibilities, the Pylontech FORCE batteries are practical, reliable and they'll get the job done unlike any other.



Missed our last newsletter? Download it via our website! Head to [yhienergy.co.nz](http://yhienergy.co.nz), click onto the [Downloads page](#) & click on the [YHI Energy Newsletters](#) thumbnail.



## Powering the future is Eltek's Flatpack2 Power Supply

The Eltek Flatpack2 integrated power system's excellent combination of cost-effective design, power density and reliability make it a product family that truly stands out from the crowd, and provides unparalleled network availability.

With today's communications demanding state of the art, practical and compact DC power systems and increasing network speeds requiring flexible and expandable power sources, the Flatpack2 is the solution specifically built for the job. In a nutshell, this little powerhouse is perfect for applications needing an expandable, easily serviceable and reliable power supply that fits within minimal space.

The Flatpack2 contains a Monitoring & Control Unit (Smartpack), LVD, battery and load MCBs, along with innovative switch mode technology with resonant topology and high switching frequency, used to minimise volume and weight and to promote even further reliability.

### Key features of the Flatpack2:

- High efficiency, small footprint
- Digital controllers
- Heat management
- Unique connection
- Global approvals



# The new Neuton Power truck battery: big power for big engines

The makeup of the average truck battery is simple: high cranking amps, an extended range of operating temperatures, and a hefty reserve capacity. But to find a superior truck battery that combines all of the above - plus some extra benefits as the cherry on top - can prove to be a difficult feat.

Manufactured to power the heavy haulers, the all-new 1000CCA Neuton Power DIN150 truck batteries feature superior starting power with sustained current loads - packing the extra punch these road warriors need to keep their engines cranking through harsh winters, and to keep their wheels turning, trip after trip.

Also extremely vibration resistant, these batteries sport enhanced structural features that make their functionality a highly reliable asset during their long service lives.

Despite the fact that NPDIN150s are full to the brim with performance-sustaining benefits, looking at the price isn't an eye-watering event thanks to the great value that these batteries offer.

With Neuton Power's trusted technology sitting under the bonnet, the owners of these batteries can feel comfortable driving away knowing that their batteries will keep their vehicle moving no matter the conditions.



## Trina Solar modules looking soaking up the sun in Hobsonville

We're always eager to showcase our products in situ, and thanks to Future Energy's recent solar installation in Hobsonville, Auckland, we have some stunning shots to share! This particular install features 12 of the all-new 370W Trina Solar Honey M modules paired with a 5kW SolaX hybrid inverter and 6.3kWh SolaX Triple Power battery.



Want to feature in our newsletter and/or on our social media pages? Send your installation shots to [tamara@yhi.co.nz](mailto:tamara@yhi.co.nz) or tag us in your posts on social media so we can share your snaps!



# New Trina Solar DUOMAX dual glass module arrives in stock

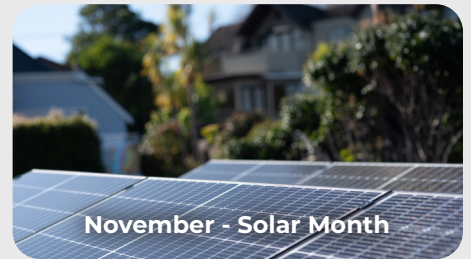
The DUOMAX 60-cell modules offer reliable and durable energy generation for your home or business. The heat strengthened dual-glass design enables greater reliability and durability backed by Trina Solar's 30-year linear power warranty. With its 0.5% annual power degradation and ~25 percent greater lifetime energy production compared to standard modules, the DUOMAX offers a faster return on your initial investment.

When placing a solar system on the roof of your home or business, you desire the highest quality and safety. The lamination and encapsulation of the DUOMAX module is built to resist both performance degradation and fire hazards. Its frameless design keeps the modules clean and performing efficiently. Trina Solar's DUOMAX panels are resistant to micro-cracking, module warping, UV aging and corrosion, and go through rigorous third-party safety testing to ensure high quality.

As the DUOMAX does not have a frame and requires a less extensive BOS, it uses fewer manufactured parts than traditional modules, which lowers the overall carbon footprint of the DUOMAX. This makes DUOMAX panels easier and cheaper to recycle.



Keep an eye out on our social media channels and in your inbox for themed specials and insights on our selected products of the month!



## CUSTOMER TESTIMONIAL

YHI Energy having warehouses in 8 separate locations solved our problem of lots of procurement work and organising, as well as regular delays with product and freight. We couldn't streamline the process as well as we can now with YHI Energy - their national footprint basically sealed the deal for us.

From what I have seen, customer service is very important to YHI Energy, and their knowledge of products, customer support and innovation have exceeded our expectations.

*Doone Morrell* - Managing Director, World Solar

## YHI ENERGY SALES TEAM

### NORTH ISLAND

**Aaron Gillon**  
Mob: 027 2888 922  
aaron@yhi.co.nz  
Based in Auckland

**Andrew Harries**  
DDI: 09 279 5313  
andrewh@yhi.co.nz  
Based in Auckland

**Benn Austin**  
Mob: 021 335 851  
benn.austin@yhi.co.nz  
Based in Auckland

**Brad Morrison**  
Mob: 027 459 4495  
brad@yhi.co.nz  
Based in Wellington

**Brian Crum**  
Mob: 027 231 2495  
brian@yhi.co.nz  
Based in Auckland

**Dave Clarke**  
Mob: 027 477 7024  
david@yhi.co.nz  
Based in Hamilton

**Dean Jorgensen**  
Mob: 021 577 755  
dean@yhi.co.nz  
Based in Auckland

**Jasmine Roxborough**  
Mob: 021 302 663  
jasmine@yhi.co.nz  
Based in Auckland

**Jonathan Scanlan**  
Mob: 021 945 665  
jonathan@yhi.co.nz  
Based in Auckland

**Simon Memmott**  
Mob: 021 332 439  
simon@yhi.co.nz  
Based in Tauranga

### SOUTH ISLAND

**Hayden Rayner**  
Mob: 027 231 2494  
hayden@yhi.co.nz  
Based in Christchurch

**James Mulder**  
Mob: 021 990 813  
james@yhi.co.nz  
Based in Christchurch

YHI (NEW ZEALAND) LTD IS A PROUD MEMBER OF:

